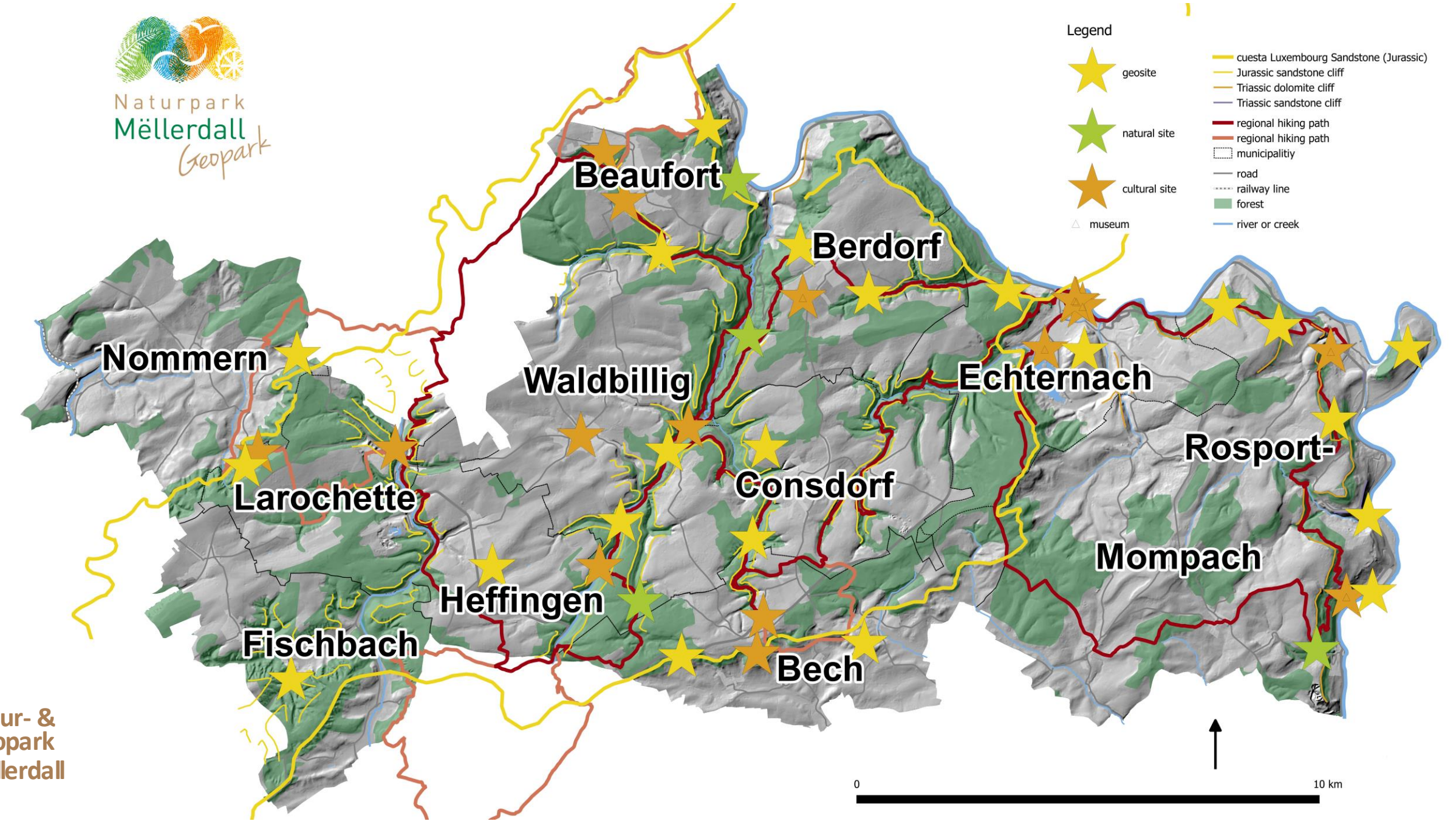
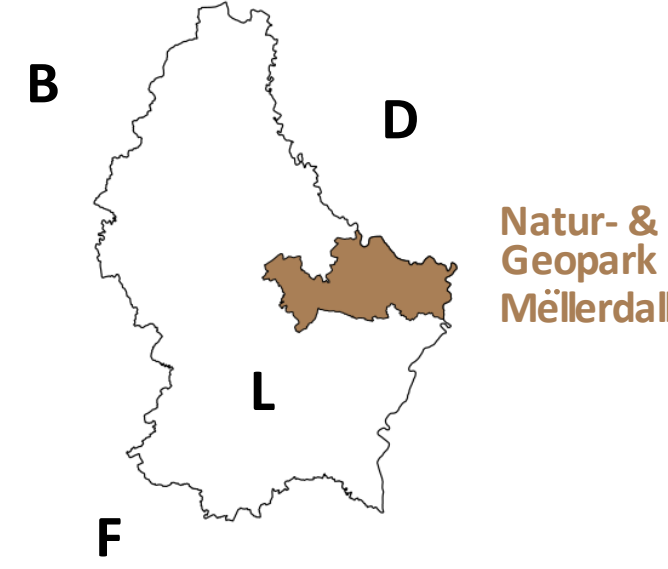
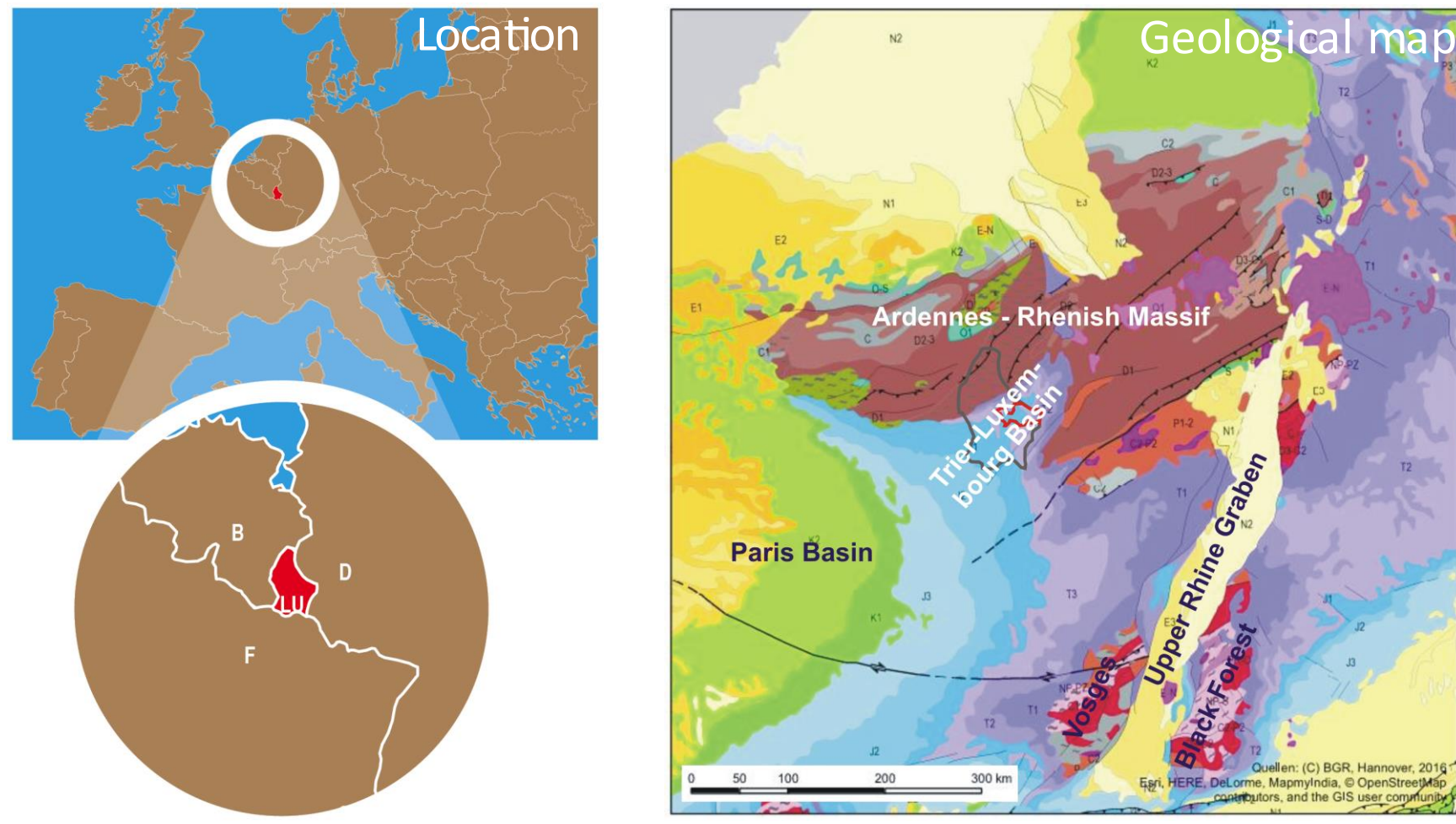
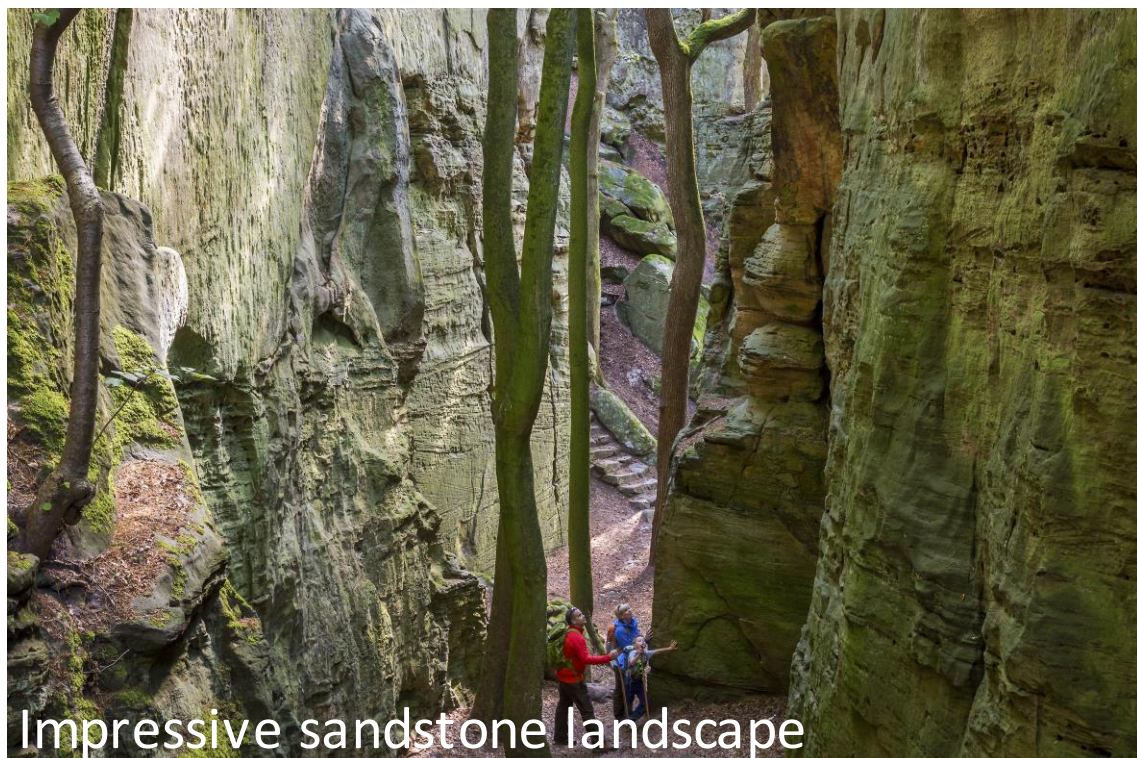


The Region

- 11 municipalities with 25.500 inhabitants
- 256 km² rural area: 39 % forests, 56 % agricultural land
- One of the most impressive sandstone landscapes in Western Europe
- A small-scaled cuesta landscape
- Nearly fully self-sufficiency in drinking water supply



Important natural and cultural heritage



Management structure, aims and objectives

National legislation

The park is a recognized body under national legislation (Law of 10th August 1993 on Nature Parks). It was established by decree of 17th March 2016.

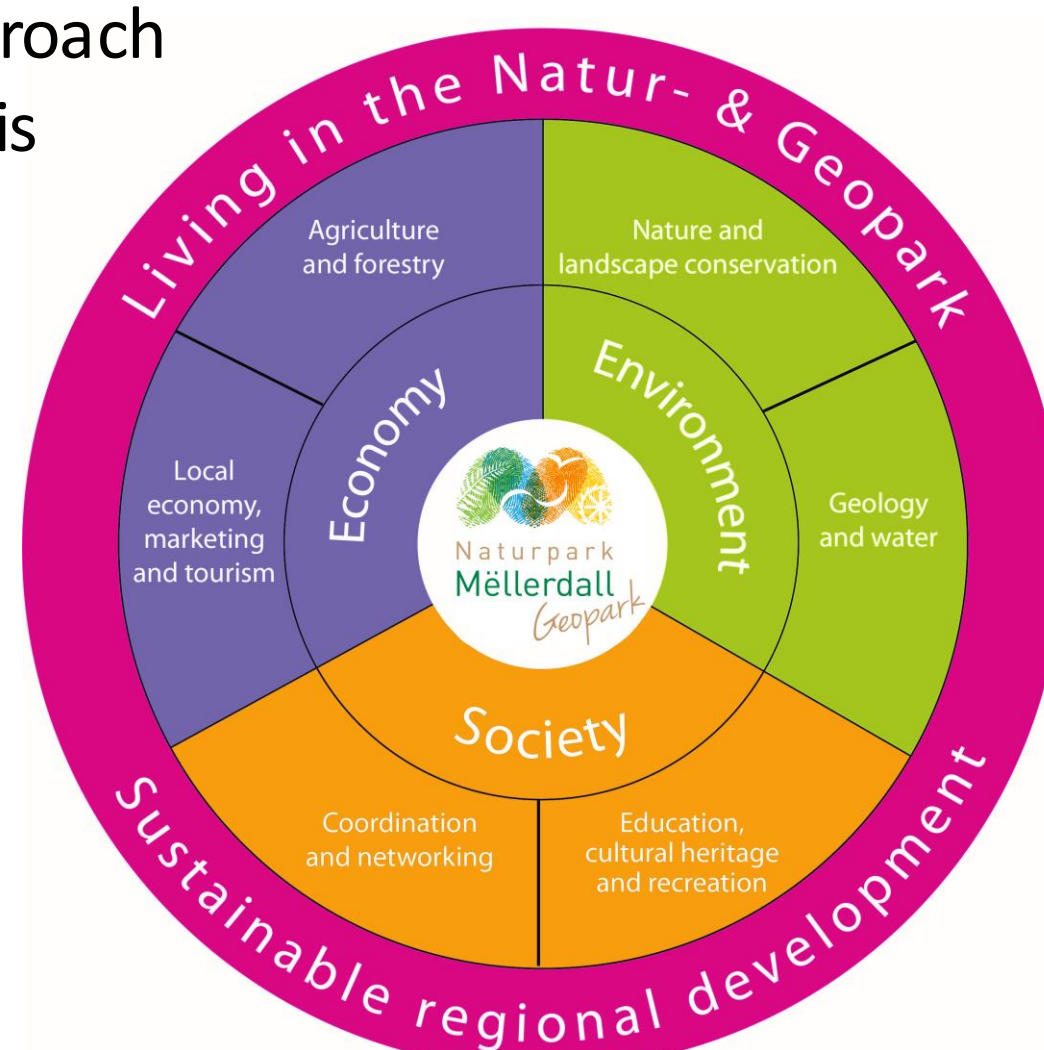
The objectives as defined in legislation are :

- preservation and restauration of its high-value natural and cultural heritage,
- protection of air, water and soil quality,
- promotion and orientation of economic and sociocultural development and improvement of employment possibilities and local quality of life ,
- promotion and orientation of touristic and leisure activities .

Regionally defined objectives

The overall concept has been developed in a bottom-up approach by local people, municipalities and national institutions and is defined in a master plan. Guiding themes are:

- development and promotion of regional products and regional timber,
- self-sufficiency in drinking water,
- diversity of landscapes,
- transfer of knowledge and
- preserving the region for all creatures and inhabitants.



Natur- & Geopark Mëllerdall



* Ministry of Energy and Spatial Planning (Spatial Planning); Ministry of Environment, Climate and Sustainable Development (Nature and Forest Management, Water Management); Ministry of Agriculture, Viticulture and Rural Development; Ministry of Culture; Ministry of Home Affairs; Ministry of the Economy - DG Tourism

Regional and national partners
 Regional Tourism Organisation Mullerthal Region- Luxembourg's Little Switzerland: Geotourism
 Education (Naturerliefnisschoul, Regional Museums)
 National Institutions: CNRA (Archaeology), MNHN (Museum of Natural History), SGL (Geological Survey); SSMN (Historical Monuments); Commission for the Protection of the Sandstone Landscape